



**Glasgow Disability Alliance**  
Confident Connected Contributing

# Looking for work is twice as hard if you're disabled or have a health condition

## We may need:

- ✓ Accessible information
- ✓ Reasonable adjustments
- ✓ Transport and support
- ✓ Awareness, confidence and understanding, to tackle stigma



**GDA is run by and for disabled people.**

We know the barriers, because we live them day to day.

**Our specialist employment advisor can help you!**



### **Fulfil your potential**

Set goals, Tackle barriers  
Build skills and confidence

### **Become an inclusive employer**

Benefit from a diverse workforce  
Tap into the skills and talents of 1 million + disabled jobseekers!

Free Learning  
and Coaching -  
Fully Accessible!

Transport +  
Personal  
Support  
Provided



## One-to-one Coaching

Advice and Support Tailored to You!

- Choosing or Changing career
- Discussing your disability and support needs at work
- 1-to-1 Support with **CVs, Applications, Mock Interviews**
- Reasonable Adjustments: **Your rights at work**
- Opportunities for learning, training and work experience

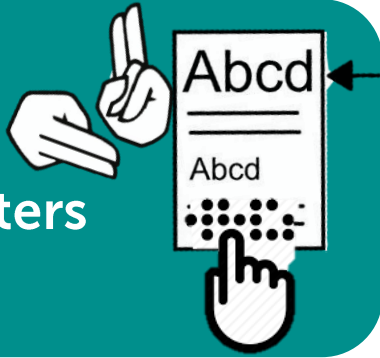


## Top tips Your Questions answered:

- Looking for work
- Top accessible employers
- **Access to Work**
- Workplace adjustments



Accessible  
Info +  
BSL Interpreters  
Available



Contact GDA on  
0141 556 7103  
info@gdaonline.co.uk

contactSCOTLAND-BSL

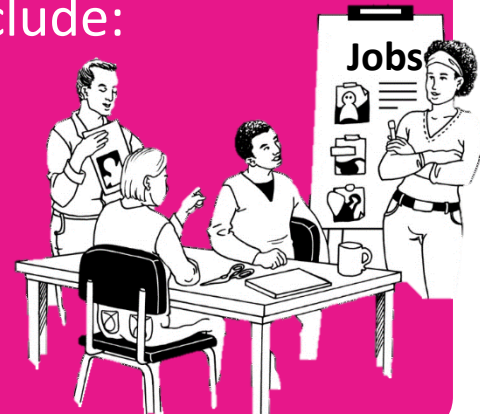
## Group Training At GDA or in your group or community

- Accessible Job searches
- Finding inclusive employers
- CV workshops, Application and Interviews Skills
- SQA employability award (40 hour course)
- Visits to Employers
- Advice on Self-employment



**Did you know?** Depending on your job,  
**Reasonable Adjustments** might include:

- Equipment, Assistive Technology
- Adapted information
- **Flexibility** of hours, breaks, duties, or home working
- **Access to Work** Travel or Support



# Employer-ability!

We offer employers a wide range of advice and support: from an informal chat to bespoke training and consultancy on a sliding scale.



**Contact Brian at GDA to find out how we can support you with:**

- Attracting the best disabled applicants
- Inclusive recruitment and selection processes: Equality Legislation in practice
- Interview do's and don'ts
- Discussing disability, health and support needs of your workers and candidates
- Making reasonable adjustments in the workplace
- Access to Work and other sources of support
- Disability Equality Training for HR managers

**0141 556 7103** [info@gdaonline.co.uk](mailto:info@gdaonline.co.uk)  
[www.gda.scot](http://www.gda.scot)



GDA



GDA\_\_online



**Glasgow Disability Alliance**  
Confident Connected Contributing



Contact us through an online  
**sign language interpreter**  
contactSCOTLAND-BSL

Scottish Registered Charity no: SC034247 PLC No: SC248467